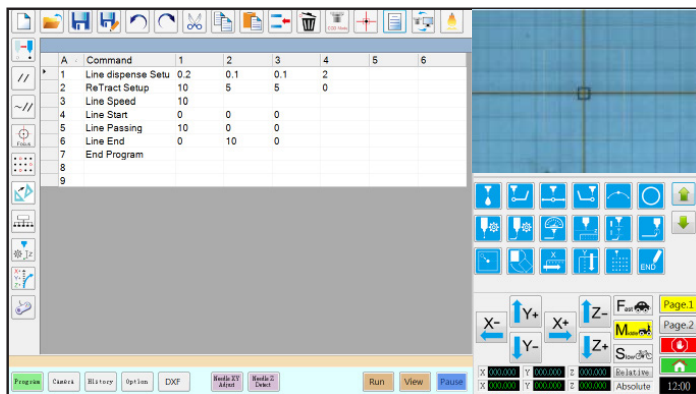


EV Series Automated Dispensing Systems

Easy automation for precise fluid application with simple vision pencil camera



EV Series pencil camera vision makes programming patterns easier.



Vision-guided DispenseMotion software makes programming easy.



Pencil camera verifies product presence.

Nordson EFD's EV Series automated systems include simple vision for precise fluid dispensing using EFD syringe barrel and valve systems.

Specialized vision-guided DispenseMotion™ software and a simple pencil camera make EFD automated systems quick to set up and easy to program. True three-dimensional motion control allows easy programming of dots, lines, circles, arcs, and compound arcs.

Platforms range from 150 x 200 mm to 570 x 500 mm, making them an ideal solution for batching or critical dispensing applications.

The EV Series can work as a standalone system or as a key part of an automated solution and is easily integrated into in-line transfer systems, rotary tables, and pallet assembly lines.

Features

- Simple camera and DispenseMotion software make setup and programming easy
- On-screen preview of the dispensing path facilitates programming
- Streamlined file import and conversion
- True three-dimensional motion control
- Wide range of work envelopes

Benefits

- Faster cycle and batch times
- Easy integration into any manufacturing operation
- Reduced production, material, and ownership costs
- New manufacturing opportunities



more info



Specifications

| Item / Model | E2V | E3V | E4V | E5V | E6V |
|----------------------------------|---|---|---|---|---|
| Part # | 7360856 | 7360857 | 7360858 | 7360859 | 7362103 |
| Part # Europe* | 7361349 | 7361350 | 7361351 | 7361352 | 7362104 |
| Number of axes | ← 3 axes → | | | | |
| Maximum working area (X / Y / Z) | 150 / 200 / 50 mm (6 / 8 / 2") | 250 / 300 / 100 mm (10 / 12 / 4") | 350 / 400 / 100 mm (14 / 16 / 4") | 450 / 500 / 150 mm (18 / 20 / 6") | 570 / 500 / 150 mm (22 / 20 / 6") |
| Workpiece payload | 5.0 kg (11.0 lb) | 10.0 kg (22.0 lb) | 10.0 kg (22.0 lb) | 10.0 kg (22.0 lb) | 10.0 kg (22.0 lb) |
| Tool payload | 1.5 kg (3.3 lb) | 3.0 kg (6.6 lb) | 3.0 kg (6.6 lb) | 3.0 kg (6.6 lb) | 3.0 kg (6.6 lb) |
| Weight | 29.0 kg (63.9 lb) | 47.5 kg (104.7 lb) | 52.5 kg (115.7 lb) | 55.0 kg (121.3 lb) | 58.0 kg (127.9 lb) |
| Dimensions | 481 _w x 510 _H x 432 _D mm (19 _w x 20 _H x 17 _D ") | 596 _w x 644 _H x 543 _D mm (23 _w x 25 _H x 21 _D ") | 696 _w x 644 _H x 638 _D mm (27 _w x 25 _H x 25 _D ") | 796 _w x 814 _H x 718 _D mm (31 _w x 32 _H x 28 _D ") | 913 _w x 812 _H x 718 _D mm (36 _w x 32 _H x 28 _D ") |
| Maximum speed (XY / Z) | 500 / 250 mm/s (20 / 10"/s) | 800 / 320 mm/s (31 / 13"/s) | 800 / 320 mm/s (31 / 13"/s) | 800 / 320 mm/s (31 / 13"/s) | 800 / 320 mm/s (31 / 13"/s) |
| Drive system | ← 3 phase micro-stepping motor → | | | | |
| Memory capacity | ← PC storage → | | | | |
| General purpose I/O | ← 8 inputs / 8 outputs (16 / 16 optional) → | | | | |
| Input AC (to power supply) | 100–240 VAC, ±10%, 50/60Hz, 20 Amp maximum, 230 W | 100–240 VAC, ±10%, 50/60Hz, 20 Amp maximum, 350 W | 100–240 VAC, ±10%, 50/60Hz, 20 Amp maximum, 350 W | 100–240 VAC, ±10%, 50/60Hz, 20 Amp maximum, 350 W | 100–240 VAC, ±10%, 50/60Hz, 20 Amp maximum, 350 W |
| Repeatability** | ← ±0.008 mm → | | | | |
| Vision | ← Pencil camera → | | | | |
| DispenseMotion software | ← Included → | | | | |
| Tip detection | ← Optional → | | | | |
| Height detection | ← Optional → | | | | |
| Approvals | ← CE, UKCA, RoHS, WEEE, China RoHS → | | | | |
| Warranty | ← 1 year, limited → | | | | |

* Complies with European safety regulations.

** Repeatability results may vary depending on method of measurement.

PROPlus / PRO Series

EFD's PROPlus / PRO Series includes smart vision CCD camera and laser height sensing capabilities for a fully integrated dispensing solution.



Free Process Evaluation

Contact Nordson EFD to configure an automated dispensing system that meets your specific needs.

- A complimentary process evaluation by experienced fluid dispensing experts
- Samples processed for customer evaluation and approval prior to purchase



For Nordson EFD sales and service in over 40 countries, contact Nordson EFD or go to www.nordsonefd.com.

Global

800-556-3484; +1-401-431-7000
info@nordsonefd.com

Europe

00800 7001 7001
infoefd.europe@nordsonefd.com

Asia

China: +86 (21) 3866 9006; china@nordsonefd.com
India: +91 80 4021 3600; india@nordsonefd.com
Japan: +81 03 5762 2760; japan@nordsonefd.com
Korea: +82-31-736-8321; korea@nordsonefd.com
SEAsia: +65 6796 9522; sin-mal@nordsonefd.com

©2022 Nordson Corporation v033022